



Benha University
Faculty of Agriculture
Biochemistry Department



Instrumental Practical Part

(Chemistry 5)

Biotechnology Program (Level 2)

(Section 4)

Course Professors

Prof. Ibrahim Abdel Alim

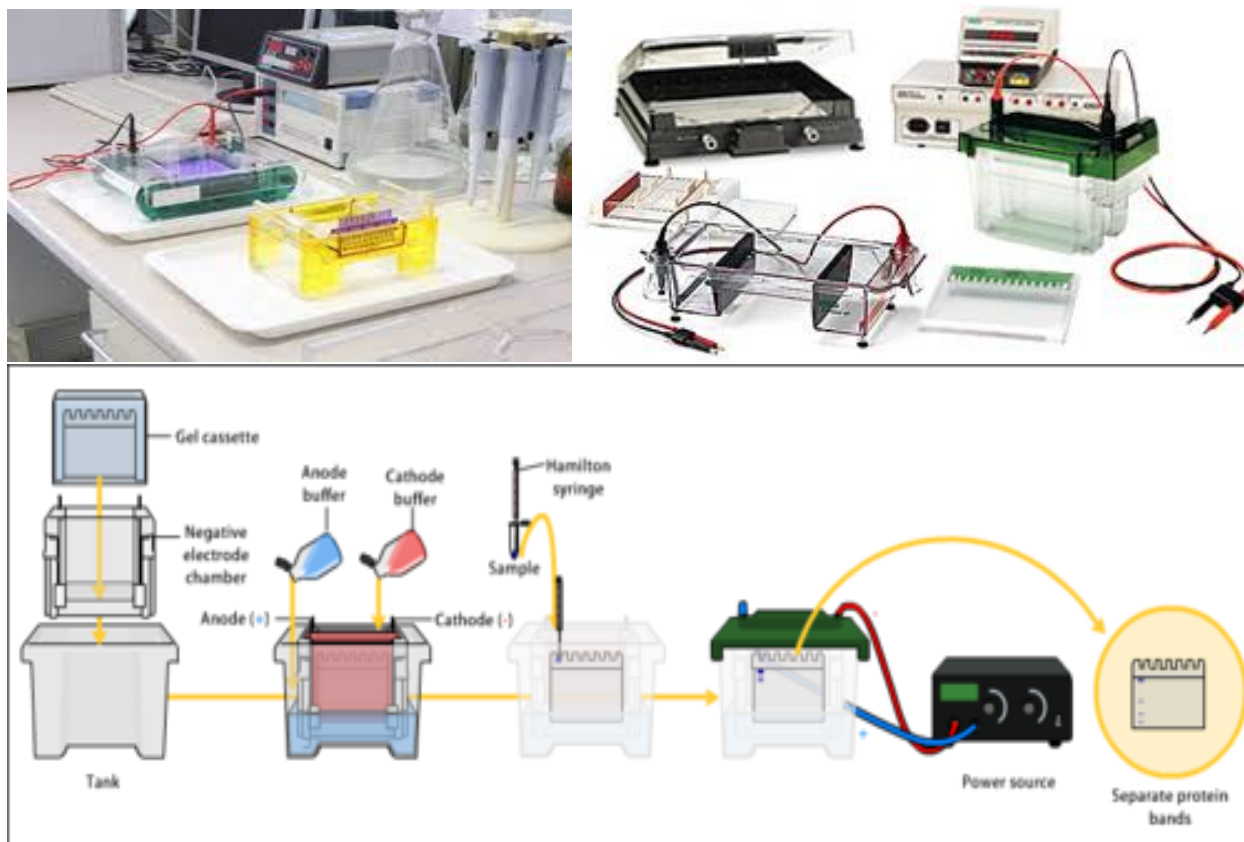
Assoc. Prof. Mohamed Frahat Foda

Amr Salem Awad Saad Allah Email:

amr.salem@fagr.bu.edu.eg

Instrumental (section 4)

Electrophoresis



Electrophoresis-Definition

- Electro=Electric; phoresis= Migration; Carry
- A kind of separation technique based on the differential migration features of charged molecules in an electric field.

Principle

When we place any charged molecules in an electric field, they move toward the positive or negative pole according to the charge they are having. Proteins do not have any net charge whereas nucleic acids have a negative charge so they move towards the anode when electric field is applied. In an electrical field charged molecules and particles migrate to the opposite charge. Usually in aqueous solution (Buffer). Due to their varying charges and masses, different molecules and particles in the mixture are migrate at different speeds.

Basis of separation

- Proteins are separated on the basis of two properties.
- Firstly they are separated on the basis of their net charge.
- After that, PAGE separates the proteins on the basis of their mass.
- Using this method small changes in charge and mass can be detected, as it is not possible that two different proteins will resolve to the same place in both dimensions.

Isoelectric Point

- There is a pH at which there is no net charge on a protein and this point is called isoelectric point (pI).
- A protein has a net negative charge above its isoelectric point, and it migrates toward the anode in an electrical field.
- The protein is positive below its isoelectric point, and it migrates toward the cathode.

Molecular Pathology

• **Nucleic acids.**

- Determining quality of DNA/RNA
- Analyses of PCR products
- Mutation detection
- Southern and Northern blotting
- Sequencing

• **Proteins**

- Western blotting
- Protein purification

Electrophoresis Types

- Gel electrophoresis
 - Agarose gel
 - Polyacrylamide gel
 - Others.
- Pulsed Field Gel Electrophoresis
- Capillary Electrophoresis

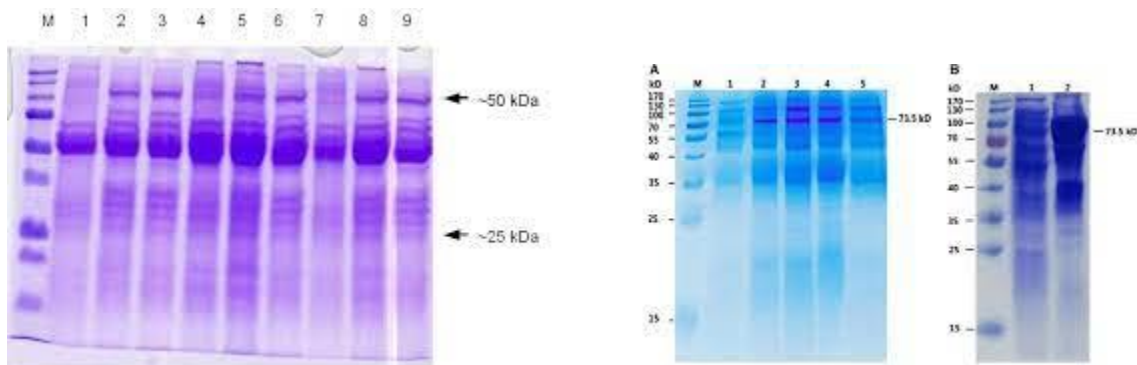
- Isoelectric focusing
- 2D electrophoresis

Gel Electrophoresis

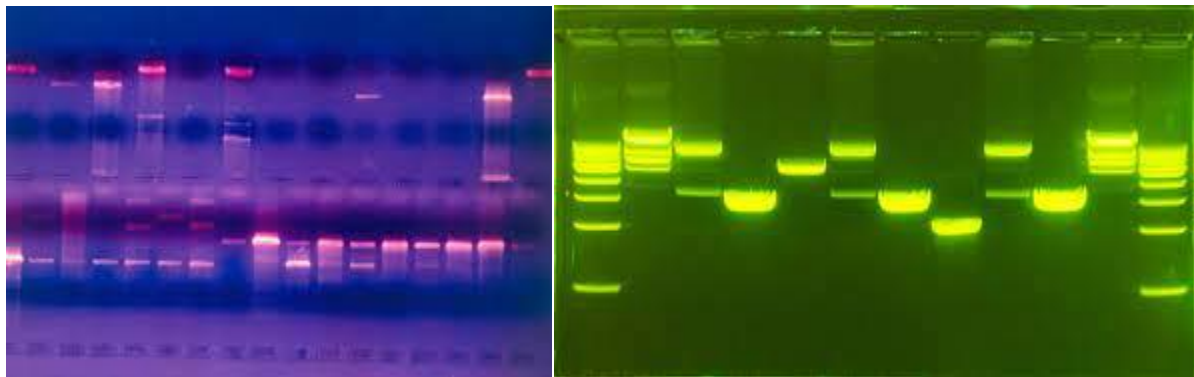
- Use of a gelatinous material.
- The gel acts as a support medium
- Used to separate proteins or nucleic acids.

Gel Types

- Starch-Rarely used
- Polyacrylamide-Protein, small nucleic acid fragments.



- Agarose-Nucleic acids, large proteins.



- Cellulose acetate-Proteins

Commonly used

Agarose Gel Electrophoresis

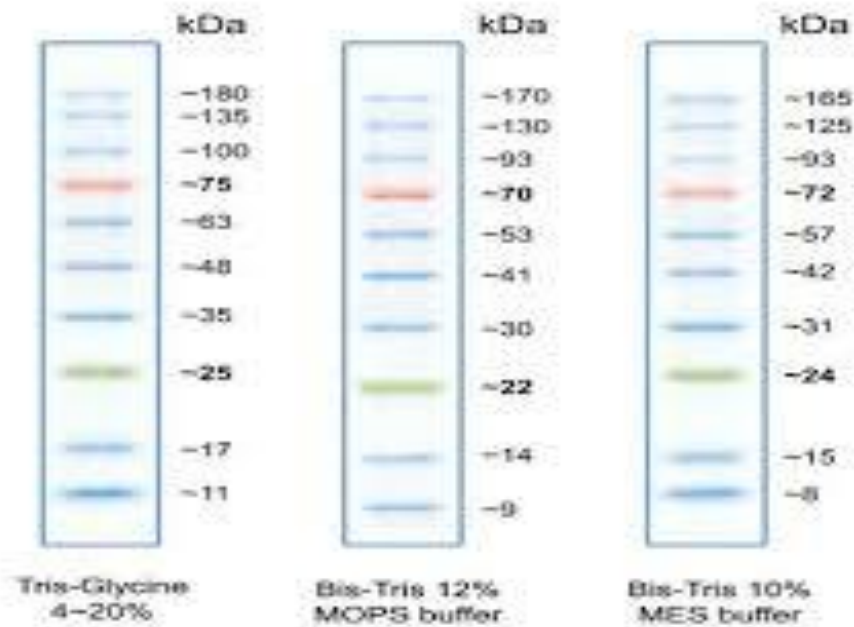
- Easy, fast, well established method for separating DNA fragments.
- Agarose, a polysaccharide derived from seaweed. Equipment
- Power supply
- Cooling Apparatus
- Electrophoresis gel apparatus-Vertical or Horizontal

- White Light/UV Light Box/Digital Camera/Gel Documentation System

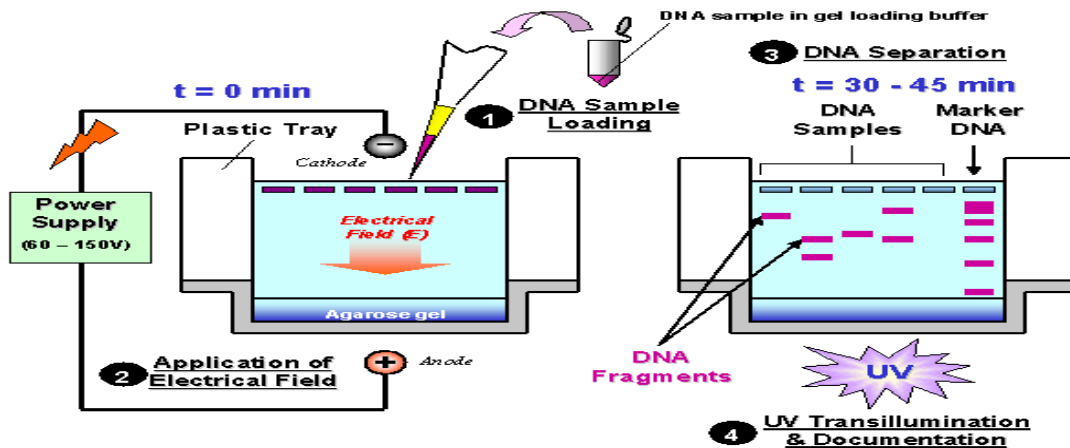
- Reagents:
 - Gel staining chemicals(eg.EtBr)
 - Prepared gels or gel chemicals
 - Buffers
 - Loading dyes
- Other laboratory equipments:
 - pH meter
 - Pipettors
 - Lab. Scale
 - Stir plates.

Protein Markers:

Protein markers may also be categorized into molecular markers though the latter are more referred to DNA markers.



Steps of analysis



Steps of analysis

- Sample preparation
- Gel, buffers, etc. preparation.
- Load markers
- Load samples
- Running of the gel
- Staining of the gel
- Photography, gel documentation
- Interpret/analysis of gel
- Separates proteins by their isoelectric points (pI) by using pH gradient of the gel.
- 2D PAGE (Two dimensional gel electrophoresis)
- Separates proteins by two properties (eg: pI and size) in a mixture.
- Western blotting:
 - Separating proteins first by size then staining with specific antibody-antigen reactions.
 - Technique gives molecular weight and identifies specific protein.

Pulsed Field Gel Electrophoresis (PFGE)

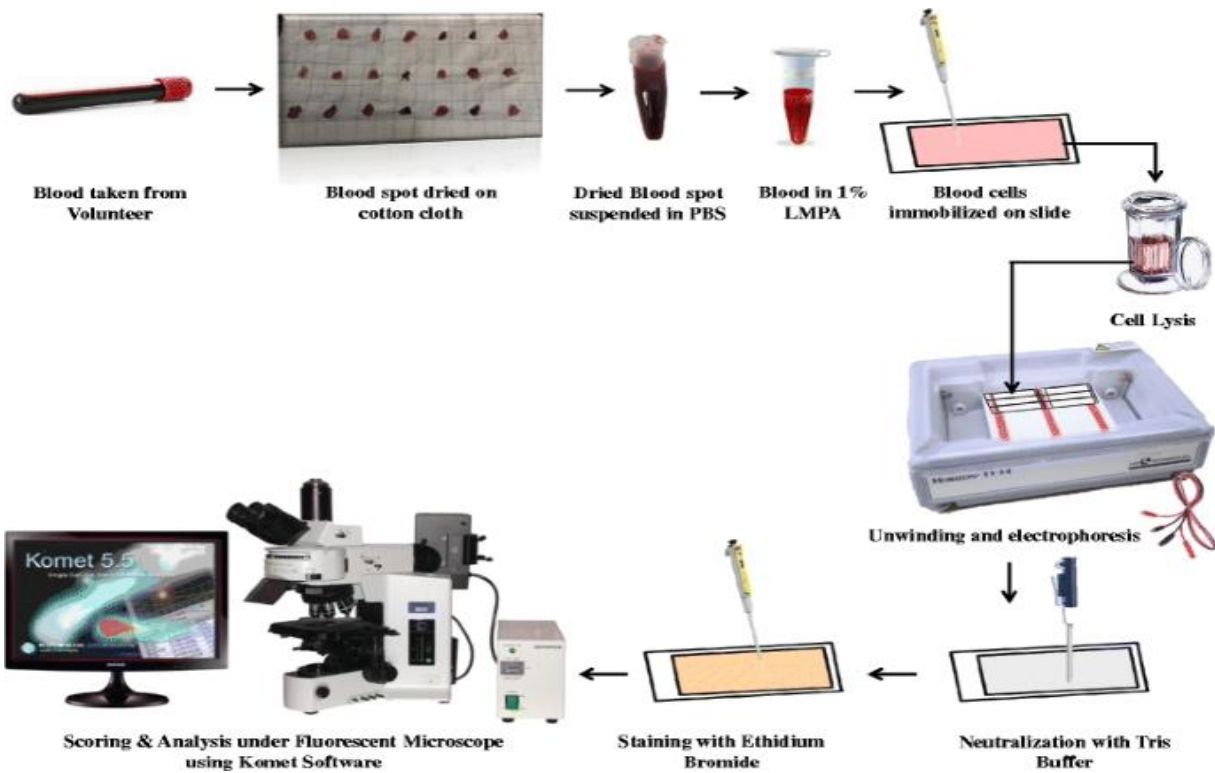
- Used for separating very large DNA molecules.
- Based on the periodically changes of directions in the electric field.
- Gnl. used for genotyping.

- Gold standard in epidemiological studies of (Subtypes) pathogenic organism.

Capillary Electrophoresis

- Process large number of samples than classical techniques.
- Main technique first described by Hjerten in 1967.
- The first commercial CE instrument in 1988.

Capillary Electrophoresis



Contents:

- Power supply.
- The anode and cathode buffer reservoirs with corresponding electrodes.
- The separation chamber (capillary tube).
- The injection system.
- The detector

• Applications

– Analyzing proteins in physiological matrices (eg. Serum, urine)

– DNA EXPERIMENTS

- To visualize Products of animal, plant or bacterial DNA Extractions
- To study RFLP FORENSIC SCIENCE
- Paternity test

- DNA Fingerprinting
 - Drug screening.
 - Analysis of pesticides, food content, pollutants.

Specific Applications

- Neoplastic disorders
 - Detection of tumor-related mutation.
 - Microsatellite instability
 - Analysis of monoclonality.
- Diagnosis of hereditary diseases and prenatal testing
- Diagnosis of infectious diseases
- Identity testing.

HUMAN HEALTH & DISEASE

- To study Human Genomics & Bioinformatics
- Restriction Enzyme Mapping
- Diagnostics(Human and plant pathogens)
- DNA Profiles of ‘Infectious Diseases’

Applications of SDS PAGE

- Molecular weight of the proteins can be determined
- To perform western blotting SDS PAGE is required

5. 2D-Gel electrophoresis

- It is a type of gel electrophoresis where proteins are separated in two dimensions
- It is the only method which is available and is capable of simultaneously separating thousands of proteins.

REFERENCES

- Temizkan G, Arda N. Eds. Moleküler Biyolojide Kullanılan Yöntemler. Nobel Tıp Kitapevi.2004.
- Patrinos G, Ansorge W. Eds. Molecular Diagnostics. Elsevier. 2005.
- A Guide to Polyacrylamide Gel Electrophoresis and Detection. BioRAD application booklet.
- Westermeier R. Electrophoresis in Practice. Wiley. 2005.
- Borst P. Ethidium DNA agarose gel electrophoresis: How it started. *IUBMB Life (International Union of Biochemistry and Molecular Biology: Life)* 2005; 57: 745-747.
- Petersen J R. et al . Capillary electrophoresis and its application in the clinical laboratory. *Clinica Chimica Acta* 2003; 330: 1-30.
- Roberts GA, Dryden DTF. DNA Electrophoresis: Historical and Theoretical Perspectives. 2013;1054:1-9.
- Stellwagen NC. Electrophoresis of DNA in agarose gels, polyacrylamide gels and in free solution. *Electrophoresis* 2009;30(S1):S188-S95.
- Perrett D. 200 years of Electrophoresis. *Chromatography Today* .December 2010.
- Basım E. Basım H. Pulsed-Field Gel Electrophoresis (PFGE) Technique and its use in Molecular Biology. *Turk J Biol* 25 (2001) 405-418.
- Prischmann J. Basics and Theory of Electrophoresis.
www.seedtechnology.net/.../ELBasics2010.pdf.
- Gödde R. et al. Electrophoresis of DNA in human genetic diagnostics – state-of-the-art, alternatives and future prospects. *Electrophoresis* 2006, 27, 939–946.
- Petersen JR. Capillary electrophoresis and its application in the clinical laboratory. *Clinica Chimica Acta* 330 (2003) 1 –30.